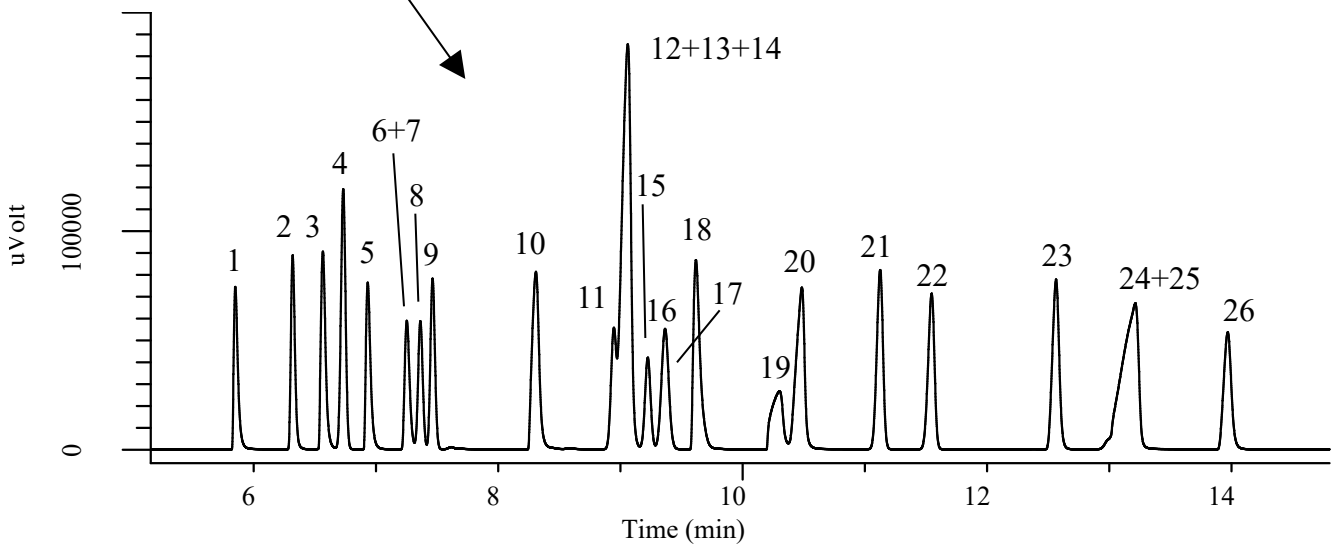
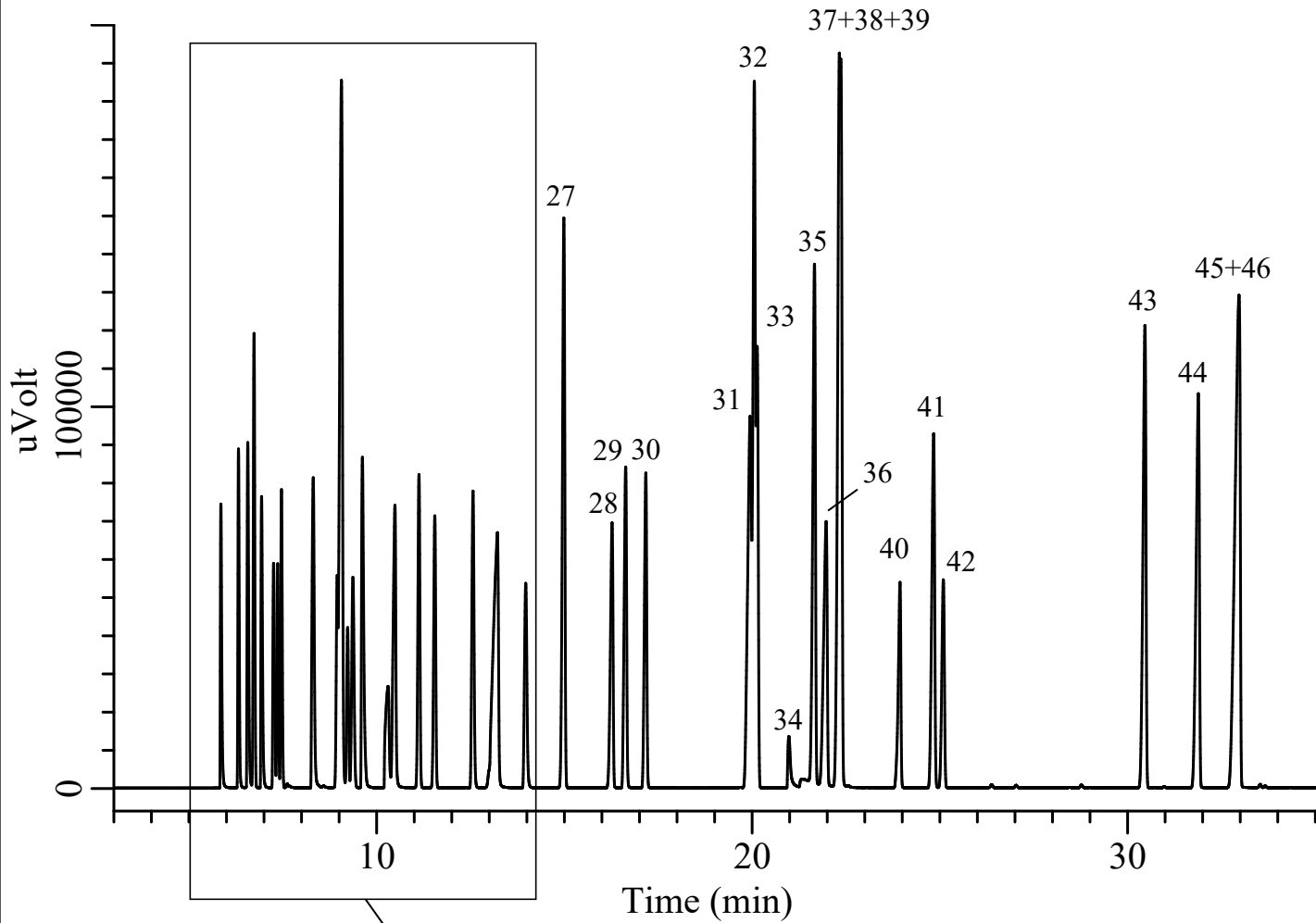


InertSearch™ for GC

InertCap® Applications

Organic Solvents

Data No. GA107-0875



InertSearch™ for GC

InertCap® Applications

Organic Solvents

Data No. GA107-0875

Conditions

System : GC/FID
Column : InertCap 17
0.25 mm I.D. x 60 m df = 0.25 µm
Col. Cat. No. : 1010-65162
Col. Temp. : 40 °C (5 min hold) - 4 °C/min - 230 °C (5 min hold)
Carrier Gas : He 130 kPa
Injection : Split flow 100 mL/min
250 °C
Detection : FID Range 10¹
250 °C
Sample Size : Mixed evenly
1.0 µL

Analyte :

- | | |
|---|---|
| 1. Methanol | 24. 3-Methyl-1-butanol(Isoamyl alcohol) |
| 2. Ethyl ether | 25. 2-Ethoxyethanol |
| 3. 2-Propanol (Isopropyl alcohol) | 26. 1,4-Dioxane |
| 4. <i>n</i> -Hexane | 27. Toluene |
| 5. Acetone | 28. Tetrachloroethylene |
| 6. Carbon disulfide | 29. 2-Hexanone(MBK) |
| 7. Methyl acetate | 30. <i>n</i> -Butyl acetate |
| 8. Dichloromethane | 31. <i>p</i> -Xylene |
| 9. <i>trans</i> -1,2-Dichloroethylene | 32. <i>m</i> -Xylene |
| 10. 2-Butanol | 33. Chlorobenzene |
| 11. <i>cis</i> -1,2-Dichloroethylene | 34. <i>N,N</i> -Dimethylformamide |
| 12. 2-Butanone(MEK) | 35. <i>o</i> -Xylene |
| 13. 2-Methyl-1-propanol(Isobutyl alcohol) | 36. 1-Methylcyclohexanol |
| 14. Ethyl acetate | 37. Cyclohexanol |
| 15. Chloroform | 38. 2-Butoxyethanol(Butyl cellosolve) |
| 16. 1,1,1-Trichloroethane | 39. Styrene |
| 17. Carbon tetrachloride | 40. 2-Ethoxyethyl acetate(Cellosolve acetate) |
| 18. Tetrahydrofuran | 41. Cyclohexanone |
| 19. 2-Methoxyethanol(Methyl cellosolve) | 42. 1,1,2,2-Tetrachloroethane |
| 20. 1-Butanol | 43. 1,2-Dichlorobenzene |
| 21. 1,2-Dichloroethane | 44. <i>o</i> -Cresol |
| 22. Trichloroethylene | 45. <i>m</i> -Cresol |
| 23. <i>n</i> -Propyl acetate | 46. <i>p</i> -Cresol |