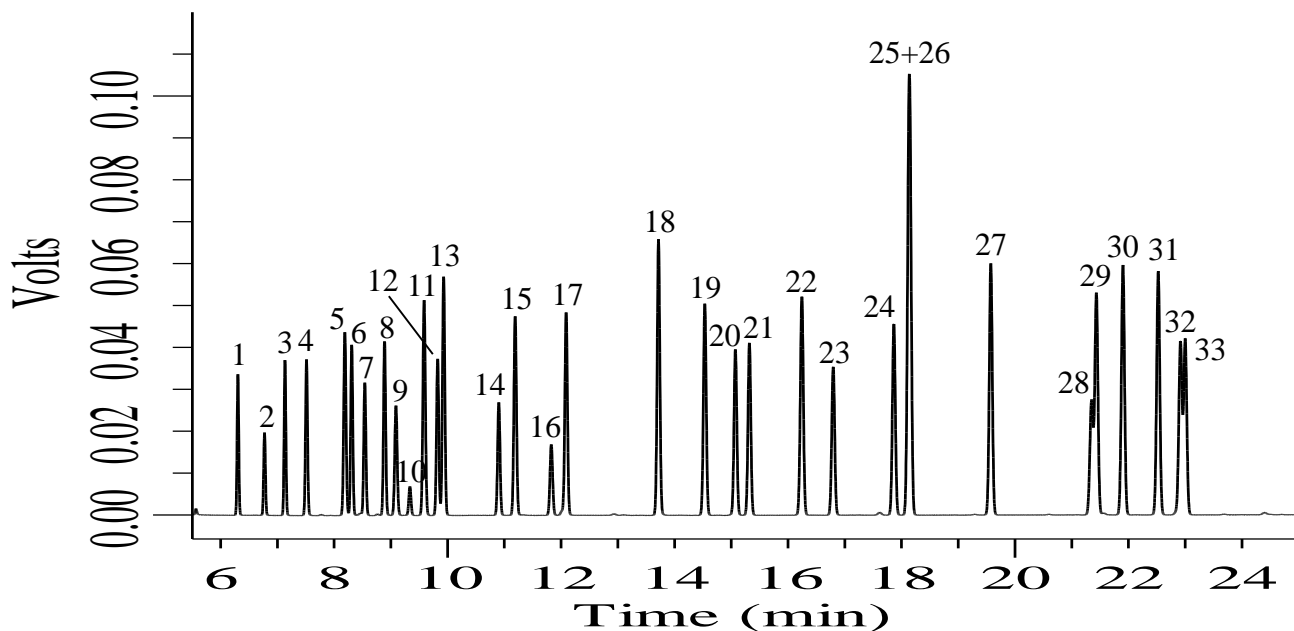


# InertSearch™ for GC

InertCap® Applications

## Organic Solvents

Data No. GA221-0644



### Conditions

**System** : GC-FID  
**Column** : InertCap AQUATIC  
0.25 mm I.D. x 60 m df = 1.0 µm  
**Col. Cat. No.** : 1010-29165  
**Col. Temp.** : 60 °C - 4 °C/min - 150 °C (3 min hold)  
**Carrier Gas** : He 200 kPa  
**Injection** : Split flow 80 mL/min  
250 °C  
**Detection** : FID Range 10<sup>0</sup>  
250 °C

**Sample Size** : Analyte in Methanol

**Analyte** : 0.2 µL  
1. 1,1-Dichloroethene  
2. Dichloromethane  
3. *trans*-1,2-Dichloroethene  
4. 1,1-Dichloroethane  
5. 2,2-Dichloropropane  
6. *cis*-1,2-Dichloroethene  
7. Chloroform  
8. Bromochloromethane  
9. 1,1,1-Trichloroethane  
10. 1,1-Dichloropropene

11. Carbontetrachloride  
12. Benzene  
13. 1,2-Dichloroethane  
14. Trichloroethene  
15. 1,2-Dichloropropane  
16. Bromodichloromethane  
17. Dibromomethane  
18. Toluene  
19. 1,1,2-Trichloroethane  
20. Tetrachloroethene  
21. 1,3-Dichloropropane  
22. Dibromochloromethane  
23. 1,2-Dibromoethane  
24. Chlorobenzene  
25. *m*-Xylene  
26. *p*-Xylene  
27. *o*-Xylene  
28. Bromoform  
29. 1,1,2,2-Tetrachloropropane  
30. 1,2,3-Trichloropropane  
31. Bromobenzene  
32. *m*-Chlorotoluene  
33. *p*-Chlorotoluene