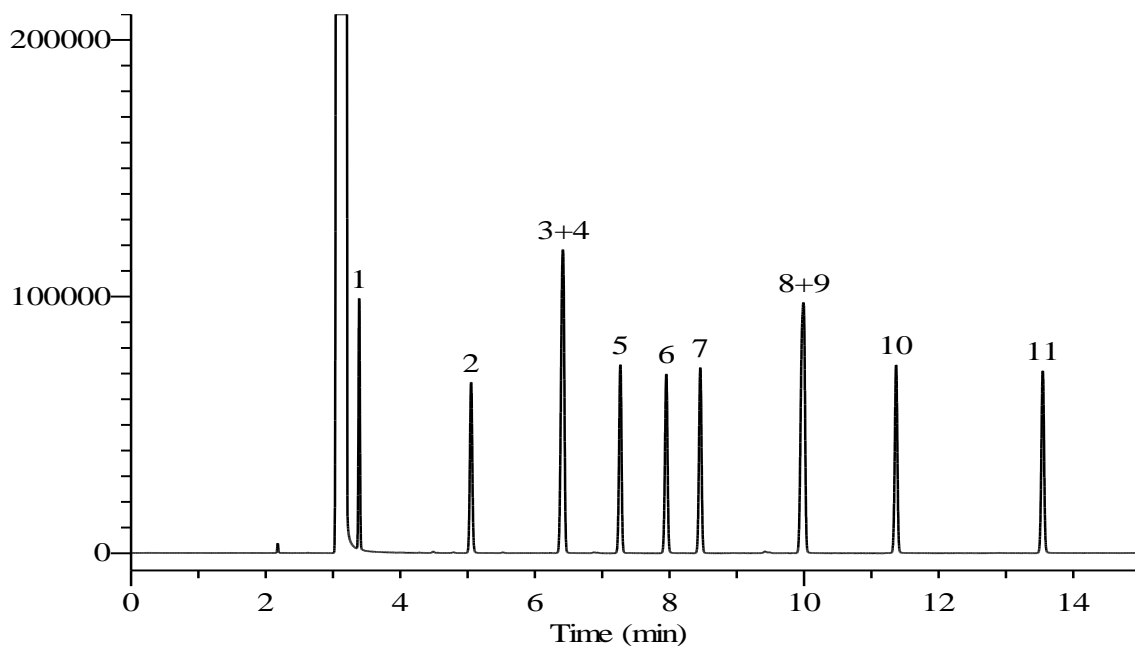


# InertSearch™ for GC

InertCap® Applications

## Flavor by Japanese Standards of Food Additives

Data No. GA231-0591



### Conditions

**System** : GC-FID  
**Column** : InertCap Pure-WAX  
0.25 mm I.D. x 30 m df = 0.25 µm  
**Col. Cat. No.** : 1010-68142  
**Col. Temp.** : 50 °C(5 min hold) - 5 °C/min - 230 °C  
**Carrier Gas** : He 90 kPa  
**Injection** : Split flow 120 mL/min  
175 °C  
**Detection** : FID Range 10<sup>0</sup>  
250 °C  
**Sample Size** : 1000 µg/mL in Methanol  
1 µL

### Analyte

1. 2-Propanol  
(Isopropanol)  
2. 1-Propanol  
3. 3-Methyl-2-butanol  
4. 2-Methyl-1-propanol  
(Isobutanol)  
5. 2-Pentanol  
6. 1-Butanol  
7. 1-Penten-3-ol  
8. 2-Methyl-1-butanol  
(2-Methylbutyl alcohol)  
9. 3-Methyl-1-butanol  
(Isoamyl alcohol)  
10. 1-Pentanol  
(Amyl alcohol)  
11. 3-Methyl-2-butenol