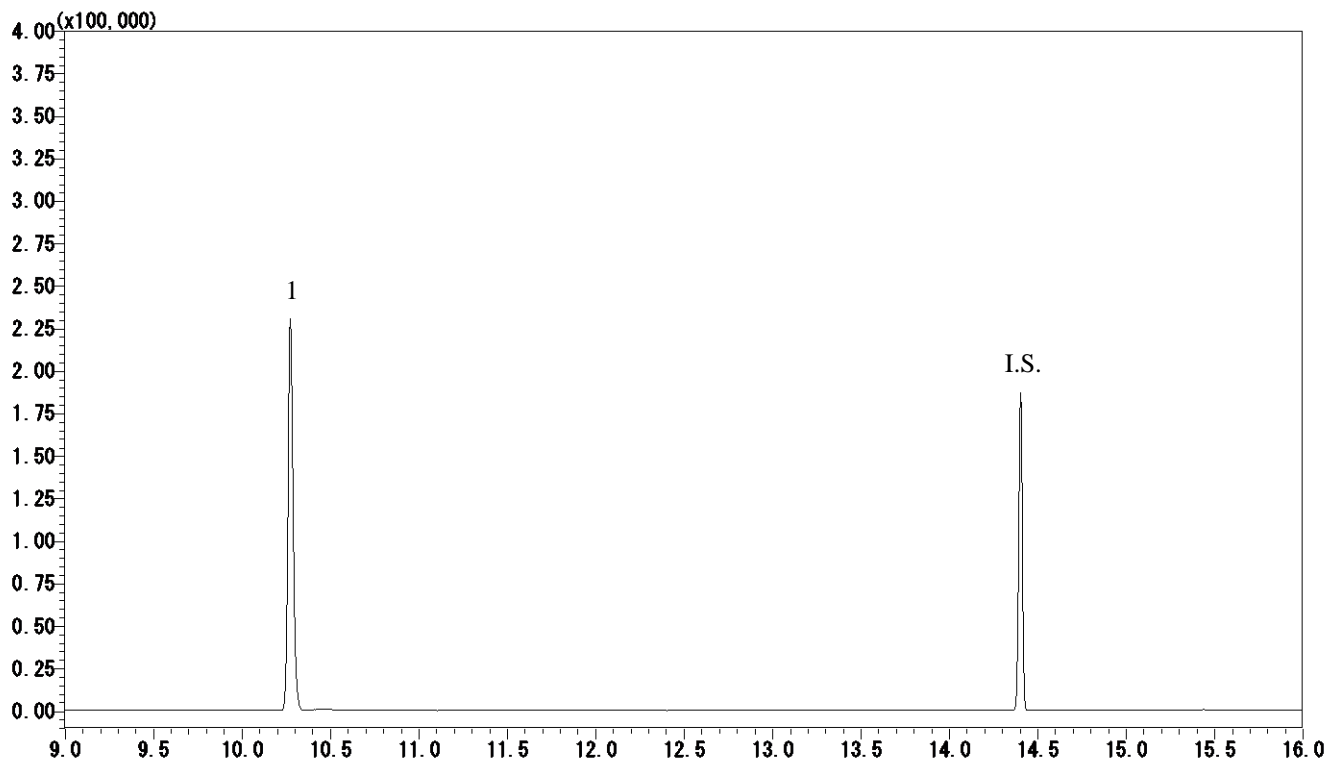


InertSearch™ for GC

InertCap® Applications

Formaldehyde

Data No. GA 232-0644



Conditions

System : GC-MS
Column : InertCap 1MS
0.25 mm I.D. x 30 m df = 1.0 µm
Col. Cat. No. : 1010-12145
Col. Temp. : 50 °C (1 min hold) - 10 °C/min - 160 °C - 20 °C/min - 280 °C (6 min hold)
Carrier Gas : He 36.0 cm/sec
Injection : Splitless 1min
250 °C
Detection : MS SIM
Interface Temp. 280 °C
Sample Size : Analyte in Hexane
1 µL

Analyte : 1. Formaldehyde (1.0 µg/mL)
I.S. 1-Chlorodecane (0.5 µg/mL)
(Deriv. by PFBOA)