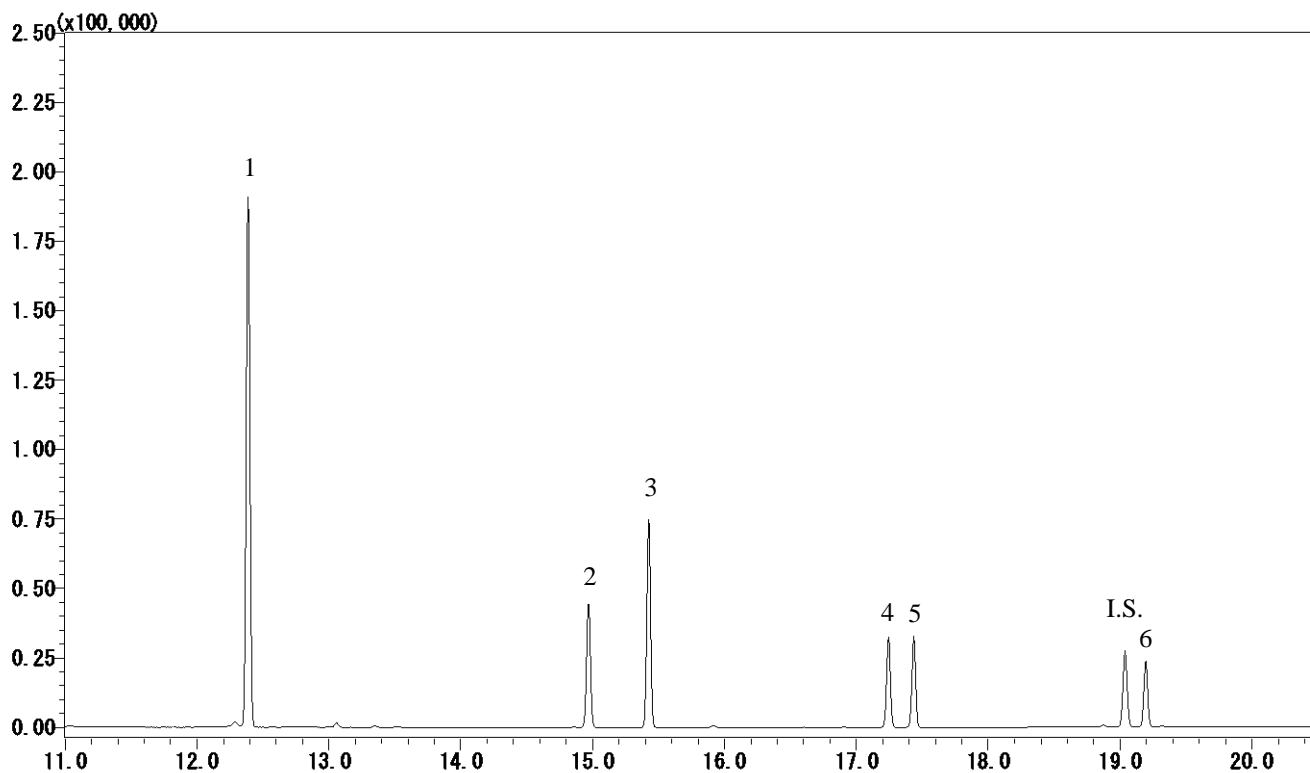


# InertSearch™ for GC

InertCap® Applications

## Phenols

Data No. GA 234-0644



### Conditions

**System** : GC-MS  
**Column** : InertCap 1MS  
0.25 mm I.D. x 30 m df = 1.0 µm  
**Col. Cat. No.** : 1010-12145  
**Col. Temp.** : 50 °C (2 min hold) - 10 °C/min - 280 °C (5 min hold)  
**Carrier Gas** : He 36.0 cm/sec  
**Injection** : Splitless 1min  
250 °C  
**Detection** : MS SIM  
Interface Temp. 280 °C  
**Sample Size** : Analyte in Ethyl acetate  
1 µL  
**Analyte** : 1. Phenol (0.5µg/mL)  
2. 2-Chlorophenol (0.5 µg/mL)  
3. 4-Chlorophenol (0.5 µg/mL)  
4. 2,6-Dichlorophenol (0.5 µg/mL)  
5. 2,4-Dichlorophenol (0.5 µg/mL)  
6. 2,4,6-Trichlorophenol (0.5 µg/mL)  
I.S. Acenaphthene-d10 (0.2 µg/mL)  
(TMS Deriv. by BSTFA)