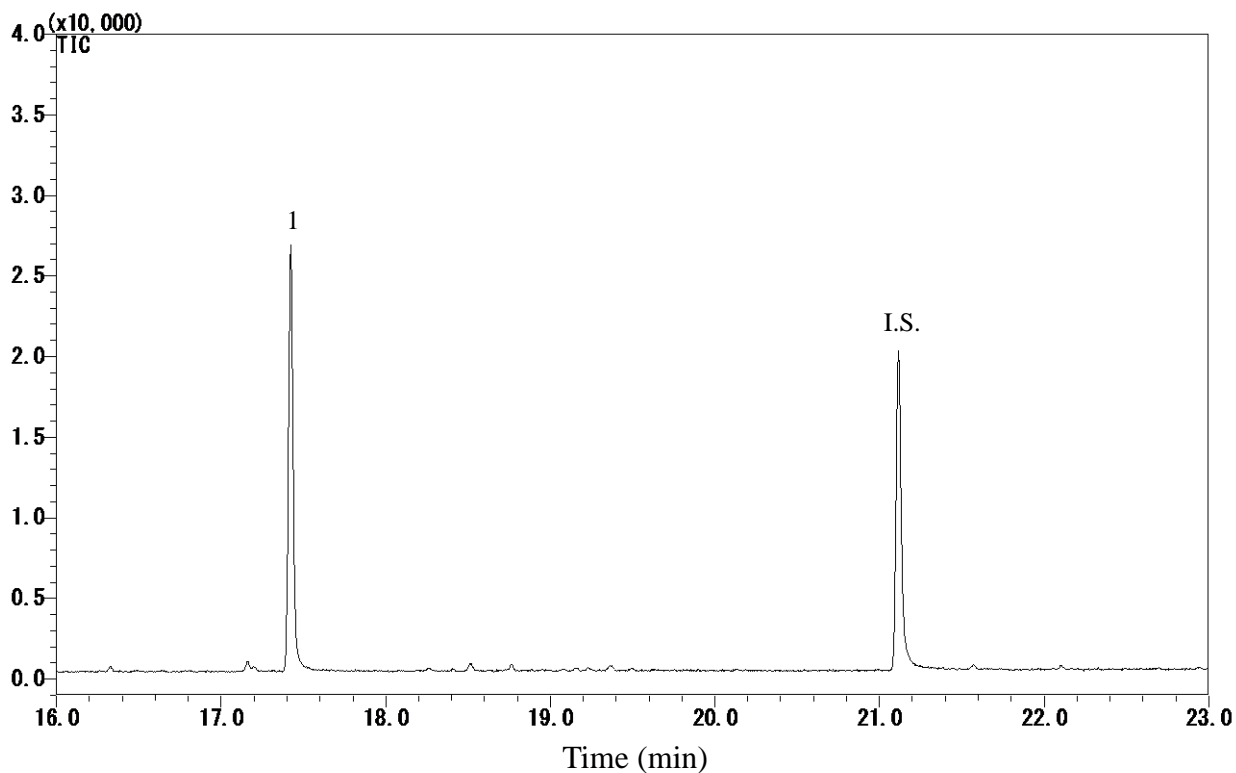


InertSearch™ for GC

InertCap® Applications

4-*t*-Octylphenol

Data No. GA 256-0644



Conditions

System : GC-MS
Column : InertCap 5MS/Sil
0.25 mm I.D. x 30 m df = 0.25 µm
Col. Cat. No. : 1010-18642
Col. Temp. : 50 °C (1 min hold) - 8 °C/min - 280 °C
Carrier Gas : He 36.3 cm/s
Injection : Splitless 1min
250 °C
Detection : MS SIM
Interface Temp. 280 °C
Sample Size : Analyte in Dichloromethane
1 µL

Analyte :
1. 4-*t*-Octylphenol (0.1 µg/mL)
I.S. 4-*n*-Nonylphenol-*d*4 (0.1 µg/mL)

InertSearch™ for GC

InertCap® Applications

4-*t*-Octylphenol

Data No. GA 256-0644

