

Application Note No. 016

## Fully Automated Preparation and Analysis of Fatty Acid Methyl Esters Using the FOCUS Sample Processing Robot

*Sjaak de Koning, Maurice Rijnen, Geert Alkema  
 ATAS GL International, Eindhoven, The Netherlands*

### Introduction

The preparation of the methyl esters of fatty acids for analysis by gas chromatography is the commonest chemical reaction performed by lipid analysts. Although it is a relatively simple operation, it is still a time consuming process. Automated preparation, extraction and injection of the methyl esters of fatty acids for gas chromatographic analysis is now possible using the FOCUS Sample Processing Robot in conjunction with GC-FID.

### Classical Method

The commonly used  $\text{BF}_3$  method, besides being laborious, also uses large quantities of solvents and reagents. To the lipid sample a specified amount of  $\text{BF}_3$ -methanol reagent is added and the solution boiled. After the addition of hexane, the solution is boiled again. Saturated sodium chloride solution is then added and the mixture is shaken vigorously. The hexane layer is transferred into another test tube and anhydrous sodium sulfate is added. The dry hexane solution is then ready for injection into the gas chromatograph.

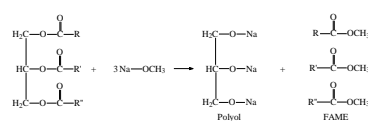
### Automated Method

FOCUS is controlled by a macro running under Windows. This tells the robot what to do and when to do it. For the sodium methoxide method used by FOCUS, the FAME macro provides for derivatisation, liquid-liquid extraction and automated injection of the sample. In the procedure described, a known amount of the lipid sample is weighed into an autosampler vial and dissolved in hexane. The vial is then placed into the sample tray. Prior to each analysis, FOCUS adds sodium methoxide to each vial and agitates the mixture. After allowing some time for the polyols formed, to settle to the bottom of the vial, the top layer is injected into the GC.

#### Procedure:

1. 10 mg lipids in 1 ml n-hexane
2. Shake the vial
3. Add an excess of sodium methoxide ( $\text{NaOCH}_3$ )
4. Shake the vial
5. Allow some time for the phases to stabilize
6. Inject 1  $\mu\text{l}$  from the upper layer

### Reaction



### Instrumentation

- ATAS FOCUS Sample Processing Robot
- ATAS OPTIC Programmable Injector
- Hewlett-Packard HP6890 GC with FID
- Hewlett-Packard ChemStation
- HP-23 Cis/Trans column (30m x 0.20mm x 0.25 $\mu\text{m}$ )

### Samples Analysed

- Olive Oil
- Margerine
- Soybean Oil
- Sunflower Oil
- Maize Oil
- Massage Oil
- Palm Oil
- Walnut Oil
- Sesame Oil
- Linseed Oil
- Coconut Oil
- Rapeseed Oil
- BCR 162 Reference
- BCR 164 Reference

#### GL Sciences B.V.

De Sleutel 9, 5652 AS, Eindhoven, The Netherlands  
 Tel. +31 (0)40 254 95 31 E-mail: info@glsciences.eu  
 Internet: www.glsciences.eu

## Results

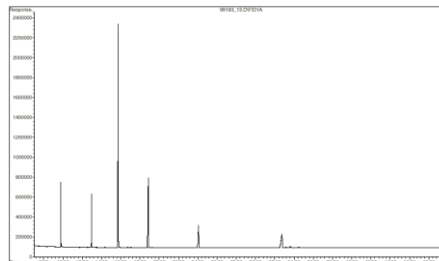
**Table 1.** RSD values in % (n=5) from the 100% method and the quantitative method for coconut oil.

Fatty Acid	RSD% (Coconut oil)		Coconut oil
	100% method	Quantitative method	100 % method (%)
8:0	1.8	2.1	8.1
10:0	1.2	2.2	6.4
12:0	0.6	2.3	49
14:0	0.4	2.6	18
16:0	1.7	3.4	8.7
18:0	2.6	2.4	8.8
18:1	3.4	3.4	0.6
18:2	-	-	0.4

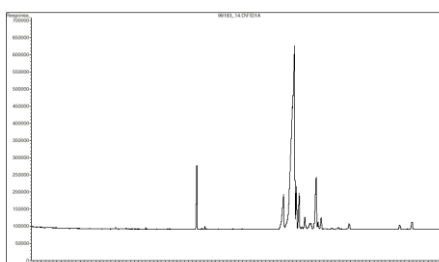
**Table 2.** Comparison 100% method for the BF<sub>3</sub> and the FOCUS procedures using an EU standard sample.

Fatty Acid	BCR 164	
	Certified and Indicative Value	NaOCH <sub>3</sub> Method
4	(4.3)	2.50
6	2.17-2.55	1.72
8	1.26-1.46	1.16
10:0	2.77-3.01	2.73
10:1 w9	(0.3)	0.32
12	3.93-4.13	3.99
12:1 w9	(0.1)	0.10
14:0 iso	(0.1)	0.11
14:0	10.44-11.14	10.95
14:1 w9	(1.1)	1.05
15:0 iso	(0.3)	0.27
15:0 ante-iso	(0.5)	0.54
15:0	(1.0)	1.10
16:0 iso	(0.2)	0.25
16:0 total	26.07-27.75	27.3
16:1 w7	(1.5)	0.33
16:1 total	(1.5)	1.35
17:0 iso	(0.5)	0.41
17:0 ante-iso	(0.4)	0.46
17:0	(0.5)	0.49
17:1	(0.3)	0.53
18:0 iso	(0.1)	0.00
18:0 total	9.70-10.91	10.67
18:1 total	24.21-25.43	24.39
18:2 w6 cis	(1.8)	2.38
18:2 conj.	(0.9)	0.43
18:2 total	2.28-3.08	2.81
18:3	0.47-0.55	0.60
20:0	(0.1)	0.17
20:1	(0.2)	0.12

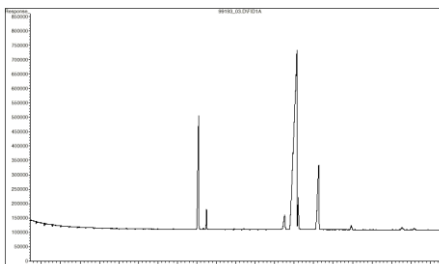
## Chromatograms



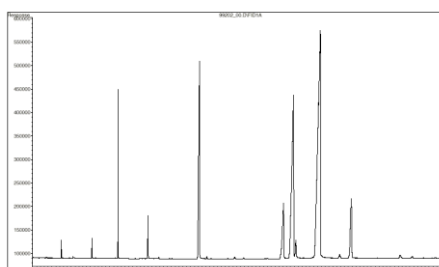
**Figure 1:** Coconut Oil



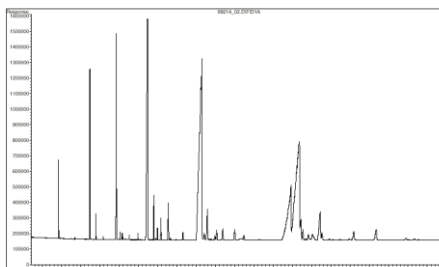
**Figure 2:** Rapeseed Oil



**Figure 3:** Olive Oil



**Figure 4:** Margarine



**GL Sciences B.V.**

De Sleutel 9, 5652 AS, Eindhoven, The Netherlands  
 Tel. +31 (0)40 254 95 31 E-mail: info@glsciences.eu  
 Internet: www.glsciences.eu

**Figure 5:** BCR 164 Reference

### ***Conclusion***

---

The results show good agreement between the new automated method and the classical approach. As such there would seem to be no disadvantage to adopting this new automated procedure. The high degree of automation and limited degree of manual work leads to high sample throughput due to the ability of the system to run 24 hours per day. Small amounts of reagents are used and so running costs and disposal costs are also lower.

### ***Acknowledgement***

---

Dr Hans-Gerd Janssen, Unilever Research Laboratory, Vlaardingen is acknowledged for his advice, encouragement and for providing reference samples.

Hewlett-Packard is acknowledged for donating the column used in this work.

ATAS FOCUS Sample Processing Robot on HP6890



**GL Sciences B.V.**

De Sleutel 9, 5652 AS, Eindhoven, The Netherlands  
Tel. +31 (0)40 254 95 31 E-mail: [info@glsciences.eu](mailto:info@glsciences.eu)  
Internet: [www.glsciences.eu](http://www.glsciences.eu)